

JUNIATA COUNTY REAL ESTATE AUCTION

Friday Eve, May 17, 2024 @6:00 PM

Remodeled Mobile Home • 2 Bed 1 Bath
Full Basement • Mini Barn

5950 William Penn HWY, Mifflintown, PA 17059



Directions: From Rt 322 E take the exit towards Port Royal then left onto William Penn HWY. Property will be on the right. Watch for signs!

Property Description: Beautiful remodeled mobile home on 0.65-acre lot. Features 2 bedrooms, 1 bathroom & full basement. Has been completely remodeled with a new roof, new windows, new flooring, & more! Spacious kitchen with new stainless steel appliances. Heat source is oil. Has public sewer & private well. A 12x12 mini barn sells with the property. Excellent location along William Penn Hwy just outside of Mifflintown & just off Rt 322 Port Royal exit. This would be an ideal investment property or permanent residence! Do not miss this opportunity!

Open House Dates: Wednesday May 1 from 1:30pm to 3:00pm

Saturday May 4 from 10:30am to 12 noon

Terms: \$10,000 deposit day of auction. Buyers pays 2% transfer tax. Settlement by July 12, 2024 or before. Agent is related to sellers.

Real Estate Taxes: \$768.34

BEILER-CAMPBELL
AUCTION SERVICES



AY# 002026

www.beiler-campbellauctions.com • 888-209-6160

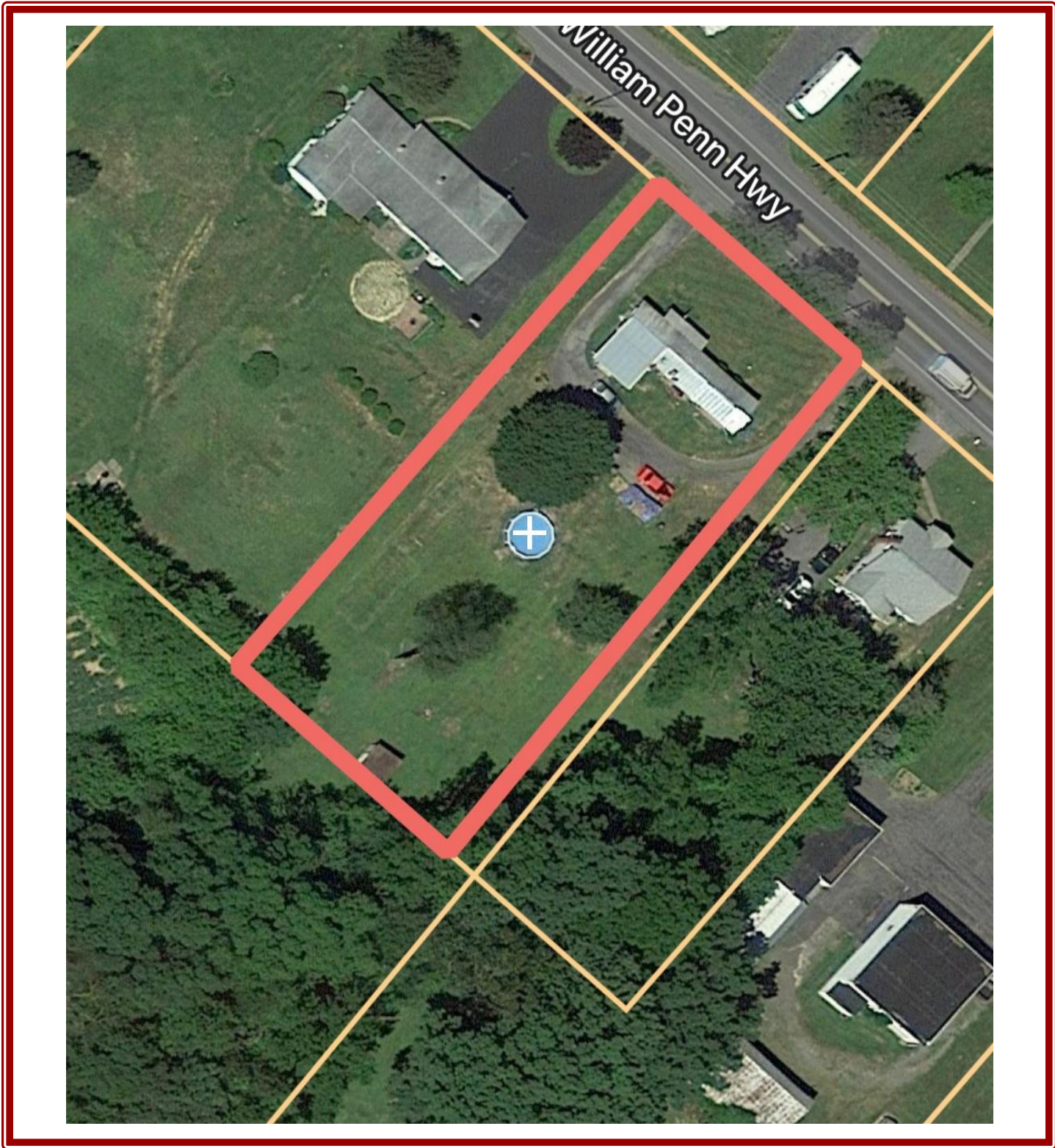
Auctioneer: Jake Yoder AU #005851

Ph. (717)-513-5386

Attorney: Seth Mosebey

Ph. (717)-535-2100





Aerial is deemed to be accurate but not guaranteed. This is not a survey.

For more information, pictures and forms go to: www.beiler-campbellauctions.com or www.auctionzip.com or www.GoToAuction.com
Or scan the QR code in the bottom right corner.

BEILER-CAMPBELL
AUCTION SERVICES
www.beiler-campbellauctions.com • 888-209-6160



Auctioneer: Jake Yoder AU #005851
Ph. (717)-513-5386
Attorney: Seth Mosebey
Ph. (717)-535-2100

