

JUNIATA COUNTY REAL ESTATE AUCTION

Friday Eve, June 7, 2024 @6:30 PM

0.51 Acre Lot • Garage & Shop

00 William Penn HWY, Mifflintown, PA 17059



Directions: From Rt 322 E take the exit towards Port Royal then left onto William Penn HWY. Property will be on the right. Watch for signs!

Property Description: 0.51 Acre lot that features a pole barn type garage & older shop with a block foundation. This was formerly known as Mexico Forge years ago. Main shop building is 27'x46' with a 11'x12' office, a 23'x30' 1 bay garage & workshop area. Pole barn/garage is 40'x44' with 14' ceilings and a former 12'x18' paint room in the back. Older 16'x48' truck shed. Property has an old oil hot air system but is not in working condition. Shop is wired but electric service would need to be hooked up by new buyer. Current zoning is residential, but garage has been grandfathered for commercial/same use. No well or septic. This property is located conveniently just minutes off Rt 322 Port Royal exit in the village of Mexico & close to Mifflintown!

Terms: \$10,000 deposit day of auction. Buyers pays 2% transfer tax. Settlement by August 6, 2024 or before.

For more information or private showing contact Jake Yoder @ 717-513-5386.

Auctioneers Note: This property will be offered at auction off-site on Friday evening June 7, 2024 @ 6:30 pm. Address where auction will be held is 6143 William Penn HWY, Mifflintown PA 17059.

BEILER-CAMPBELL
AUCTION SERVICES



AY# 002026

www.beiler-campbellauctions.com • 888-209-6160

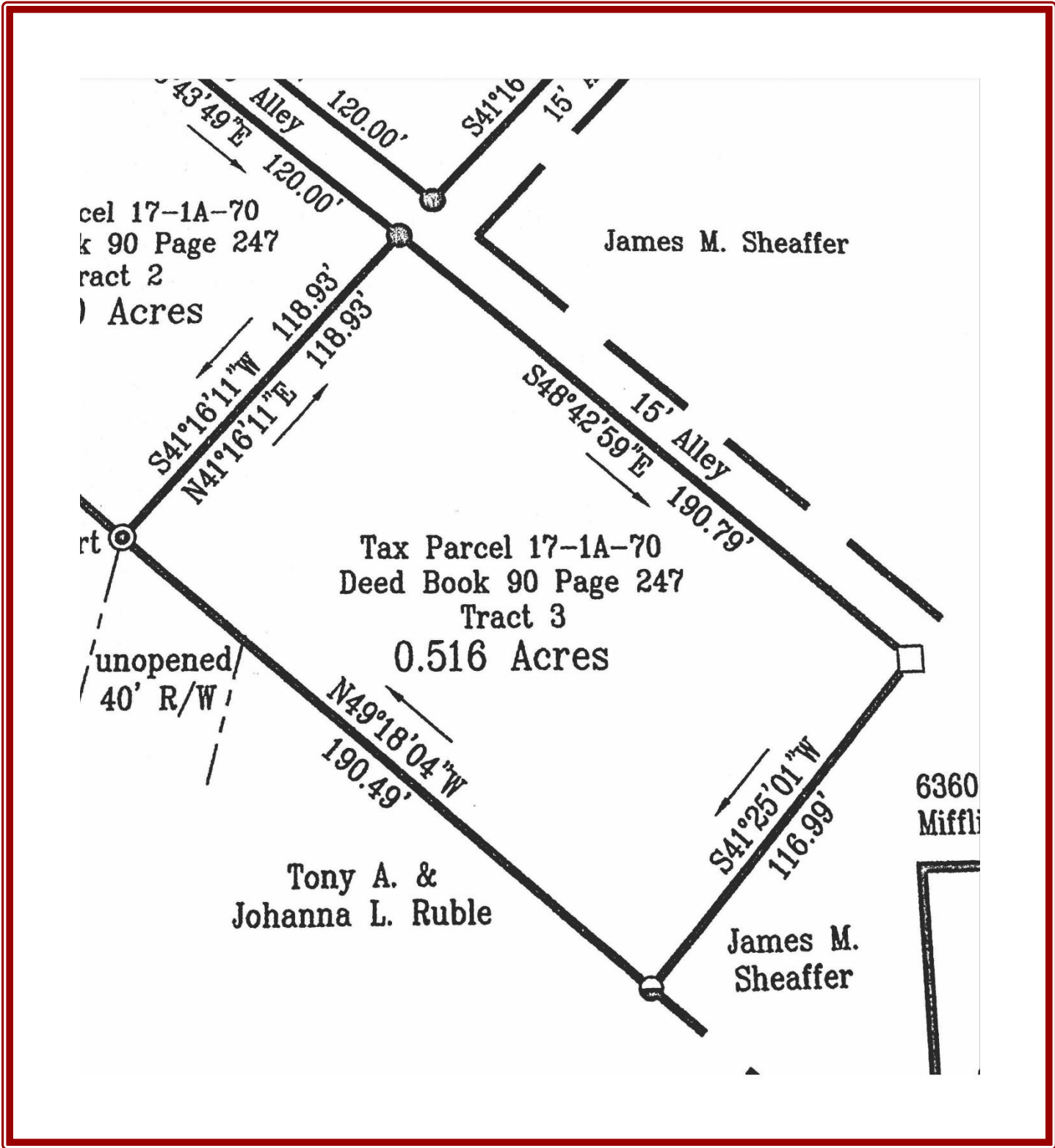
Auctioneer: Jake Yoder AU #005851

Ph. (717)-513-5386

Attorney: Powell Law Office

Ph. (717)-436-8780





For more information, pictures and forms go to: www.beiler-campbellauctions.com or www.auctionzip.com or www.GoToAuction.com
 Or scan the QR code in the bottom right corner.

BEILER-CAMPBELL
AUCTION SERVICES
www.beiler-campbellauctions.com • 888-209-6160



Auctioneer: Jake Yoder AU #005851
Ph. (717)-513-5386
Attorney: Powell Law Office
Ph. (717)-436-8780

