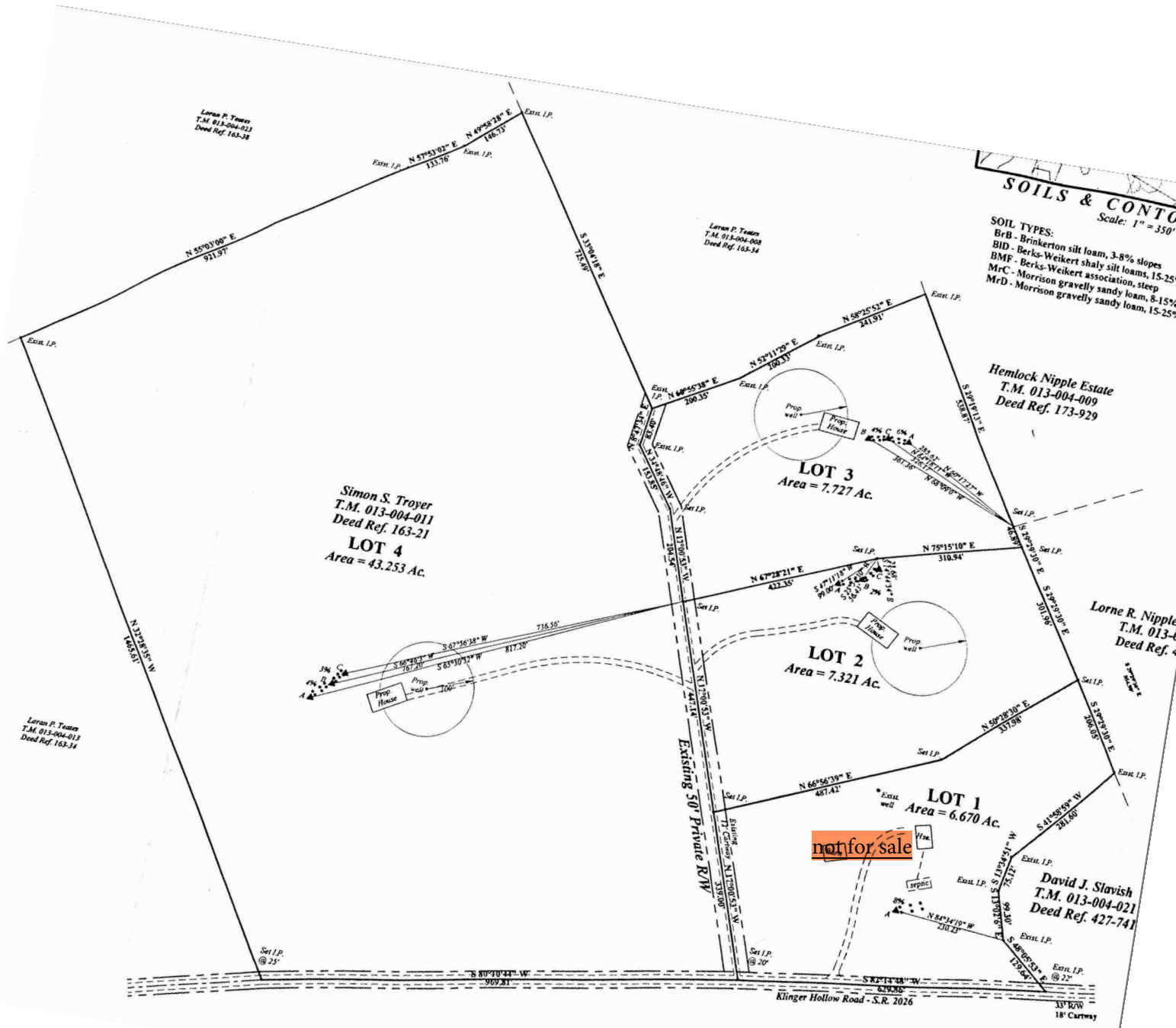


SOILS & CONTO
Scale: 1" = 350'

- SOIL TYPES:**
 BrB - Brinkerton silt loam, 3-8% slopes
 BID - Berks-Weikert shaly silt loams, 15-25%
 BMF - Berks-Weikert association, steep
 MrC - Morrison gravelly sandy loam, 8-15%
 MrD - Morrison gravelly sandy loam, 15-25%



PLAN NARRATIVE:
This plan proposes the subdivision of Troyer into four (4) lots. The app has been completed.