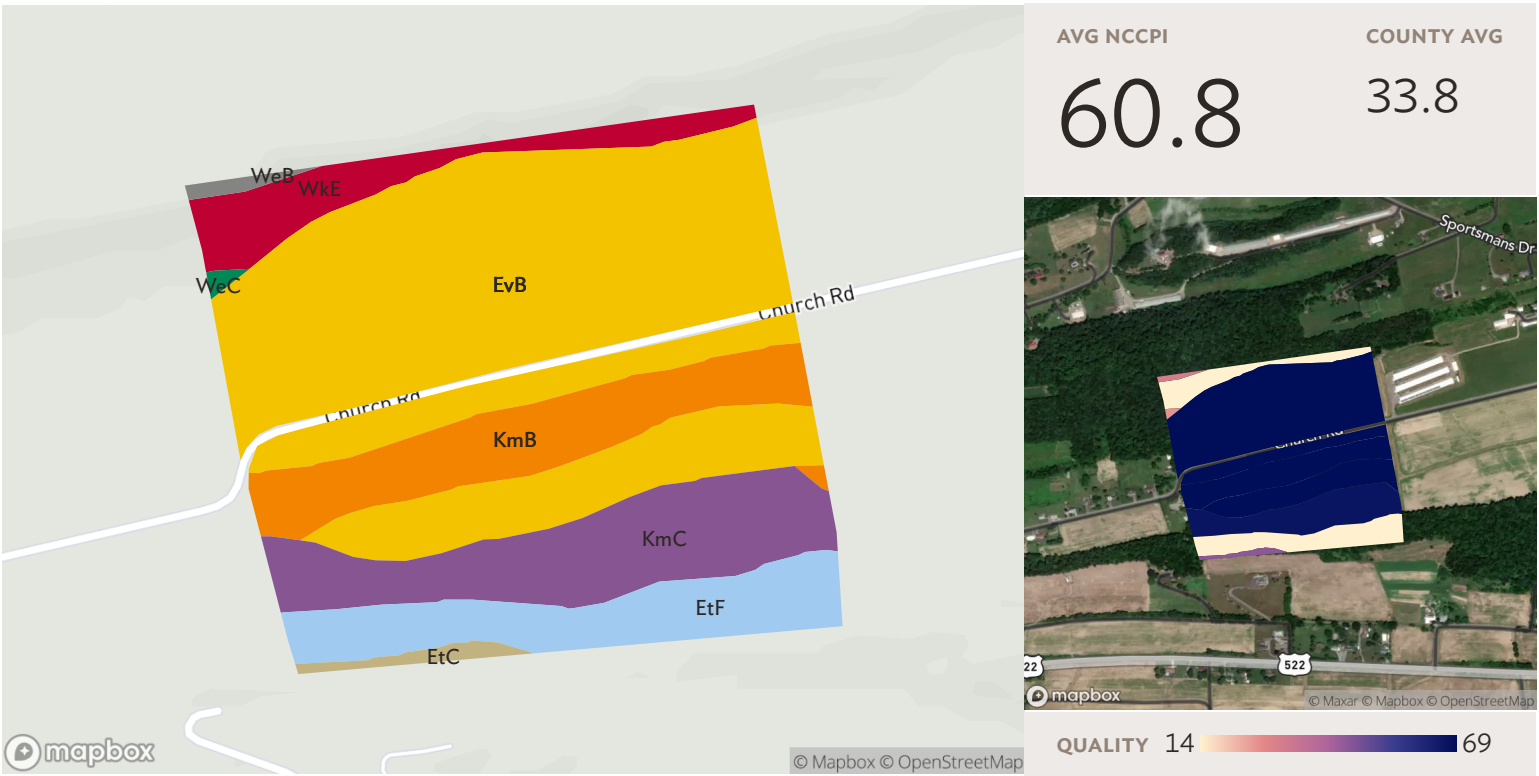


2 fields, 73 acres in Snyder County, PA



AVG NCCPI

60.8

COUNTY AVG

33.8

QUALITY 14

69

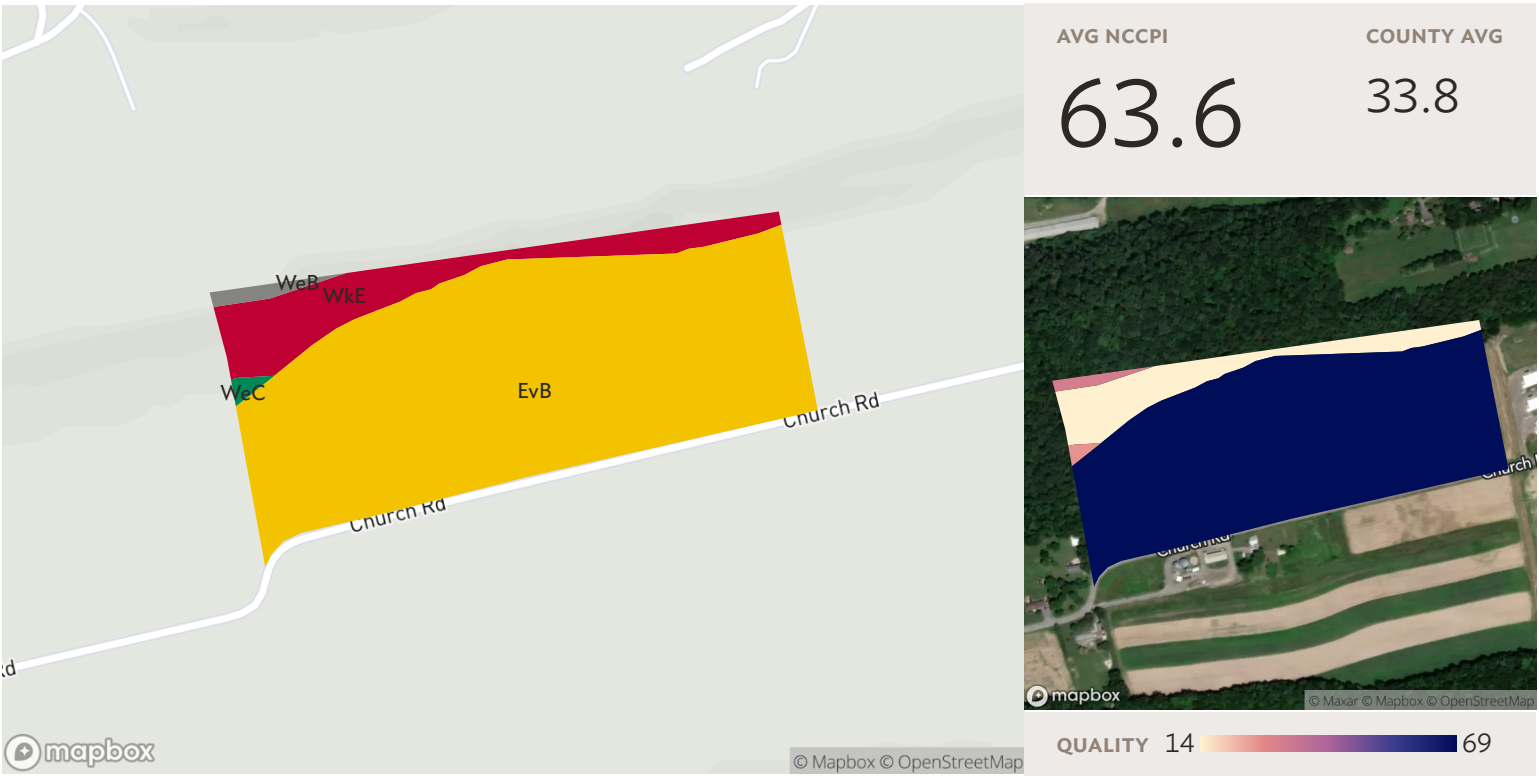
All fields

73 ac.

Source: NRCS Soil Survey

| SOIL CODE | SOIL DESCRIPTION | ACRES | PERCENTAGE OF FIELD | SOIL CLASS | NCCPI |
|-----------|--|-------|---------------------|------------|--------------|
| EvB | Evendale cherty silt loam, 3 to 8 percent slopes | 40.10 | 54.7% | 3 | 73.7 |
| KmC | Kreamer cherty silt loam, 8 to 15 percent slopes | 10.77 | 14.7% | 3 | 66.7 |
| KmB | Kreamer cherty silt loam, 3 to 8 percent slopes | 8.86 | 12.1% | 2 | 70.2 |
| EtF | Elliber very cherty silt loam, 25 to 70 percent slopes | 7.66 | 10.5% | 7 | 10.9 |
| WeE | Weikert and Klinesville shaly silt loams, steep | 4.67 | 6.4% | 7 | 6.5 |
| EtC | Elliber very cherty silt loam, 8 to 15 percent slopes | 0.68 | 0.9% | 4 | 45.4 |
| WeB | Weikert channery silt loam, 3 to 8 percent slopes | 0.36 | 0.5% | 3 | 31.2 |
| WeC | Weikert channery silt loam, 8 to 15 percent slopes | 0.16 | 0.2% | 4 | 26.0 |
| | | | | | 73.26 |
| | | | | | 60.8 |

2 fields, 73 acres in Snyder County, PA



AVG NCCPI

63.6

COUNTY AVG

33.8

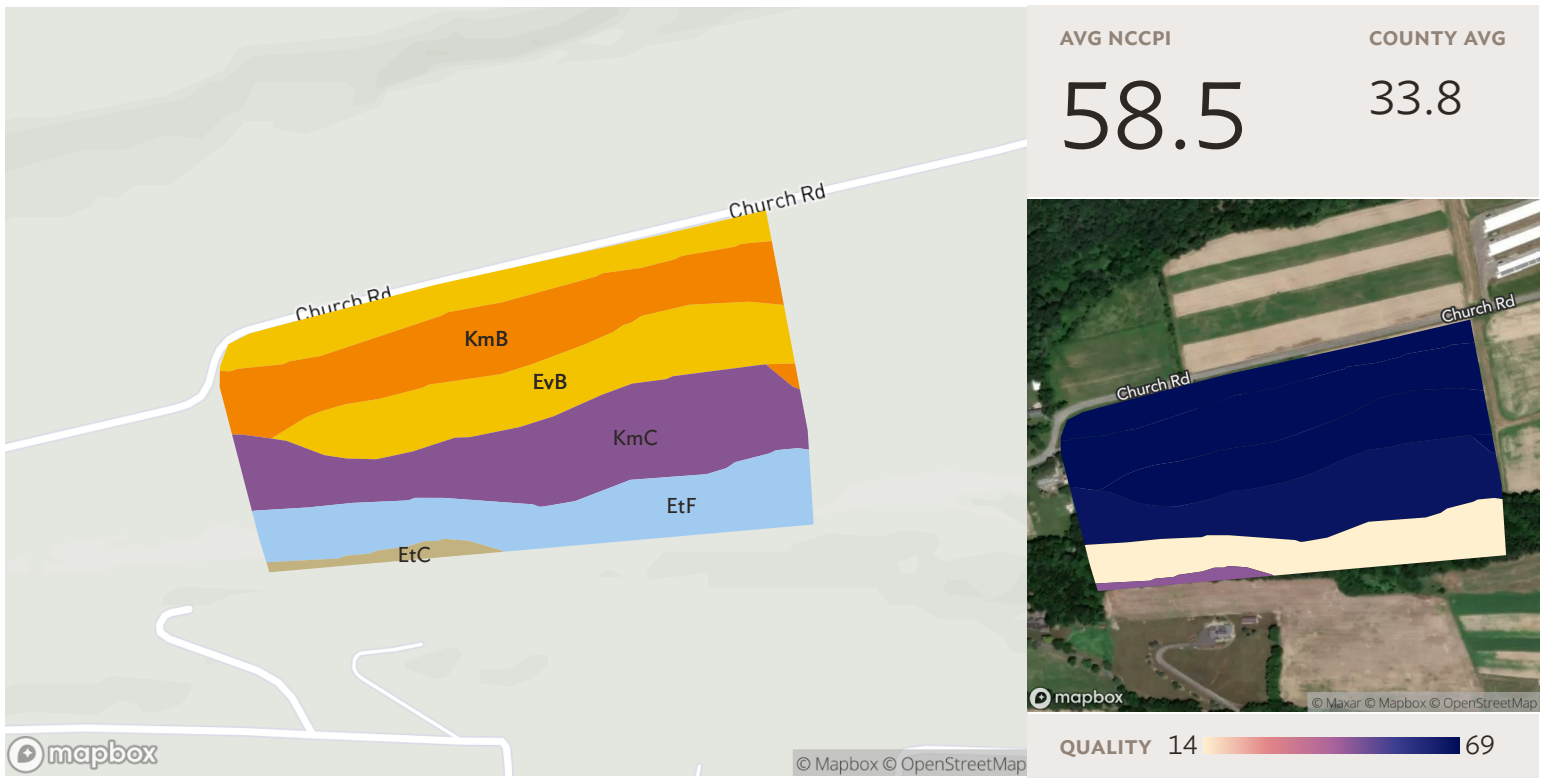
Field 1

Source: NRCS Soil Survey

33 ac.

| SOIL CODE | SOIL DESCRIPTION | ACRES | PERCENTAGE OF FIELD | SOIL CLASS | NCCPI |
|-----------|--|-------|---------------------|------------|-------------|
| ■ EvB | Evendale cherty silt loam, 3 to 8 percent slopes | 28.12 | 84.4% | 3 | 73.7 |
| ■ WkE | Weikert and Klinesville shaly silt loams, steep | 4.67 | 14.0% | 7 | 6.5 |
| ■ WeB | Weikert channery silt loam, 3 to 8 percent slopes | 0.36 | 1.1% | 3 | 31.2 |
| ■ WeC | Weikert channery silt loam, 8 to 15 percent slopes | 0.16 | 0.5% | 4 | 26.0 |
| | | | | | 63.6 |

2 fields, 73 acres in Snyder County, PA



Field 2

Source: NRCS Soil Survey

40 ac.

| SOIL CODE | SOIL DESCRIPTION | ACRES | PERCENTAGE OF FIELD | SOIL CLASS | NCCPI |
|-----------|--|-------|---------------------|------------|--------------|
| EvB | Evendale cherty silt loam, 3 to 8 percent slopes | 11.97 | 30.0% | 3 | 73.7 |
| KmC | Kreamer cherty silt loam, 8 to 15 percent slopes | 10.77 | 27.0% | 3 | 66.7 |
| KmB | Kreamer cherty silt loam, 3 to 8 percent slopes | 8.86 | 22.2% | 2 | 70.2 |
| EtF | Elliber very cherty silt loam, 25 to 70 percent slopes | 7.66 | 19.2% | 7 | 10.9 |
| EtC | Elliber very cherty silt loam, 8 to 15 percent slopes | 0.68 | 1.7% | 4 | 45.4 |
| | | | | | 39.95 |
| | | | | | 58.5 |

Snyder County



October 28, 2024

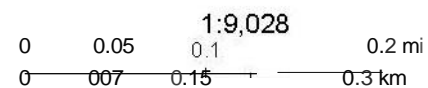
Results (Pol
 drawGraphics_poly
 polygons

Parcels
 User draw
 User drawn lines

Lakes
 Streams
 Roads
 Local

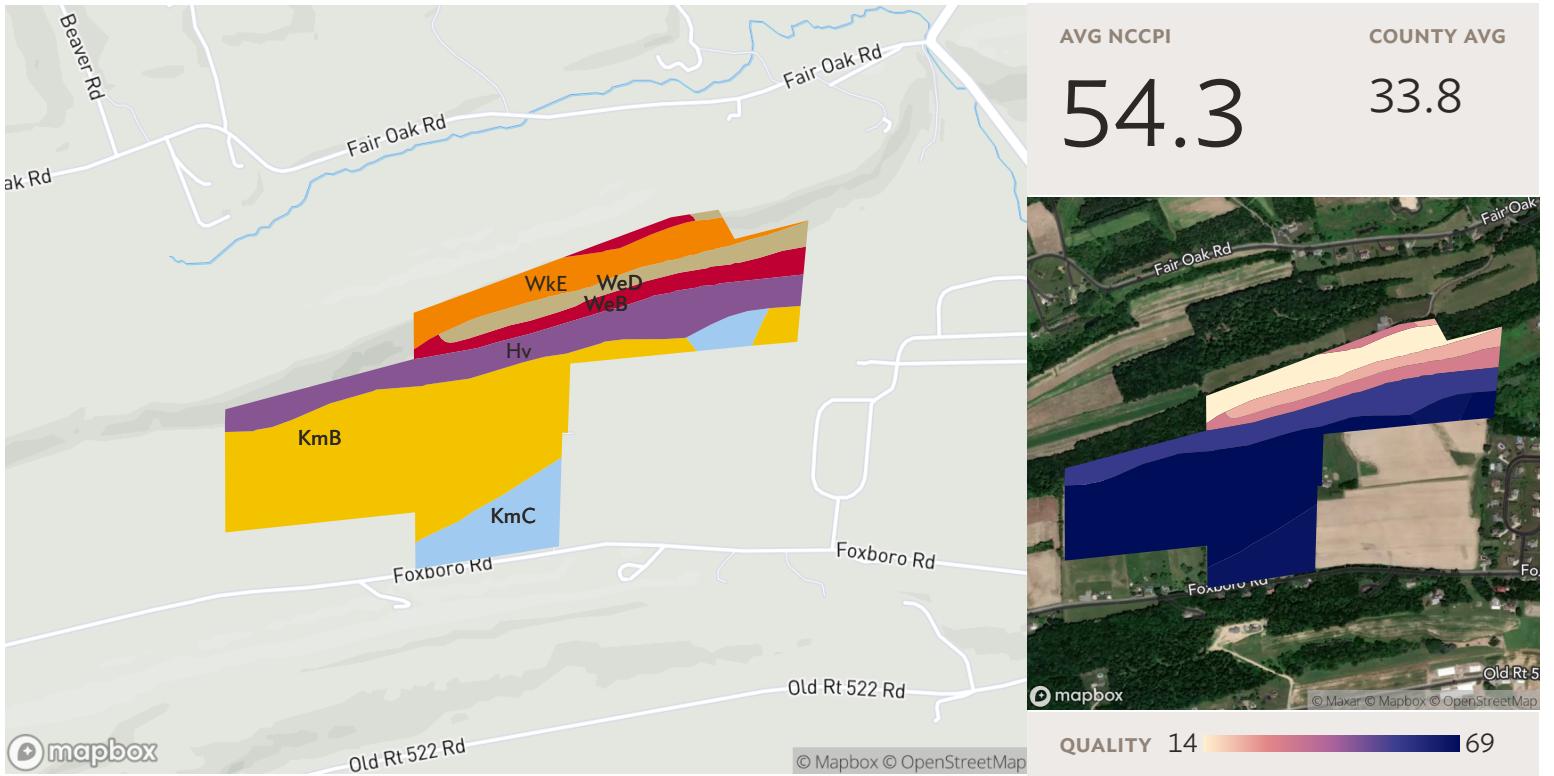
Private
 Municipal Bound
 any

Addresses
 Current
 Pending



Maxar

2 fields, 98 acres in Snyder County, PA



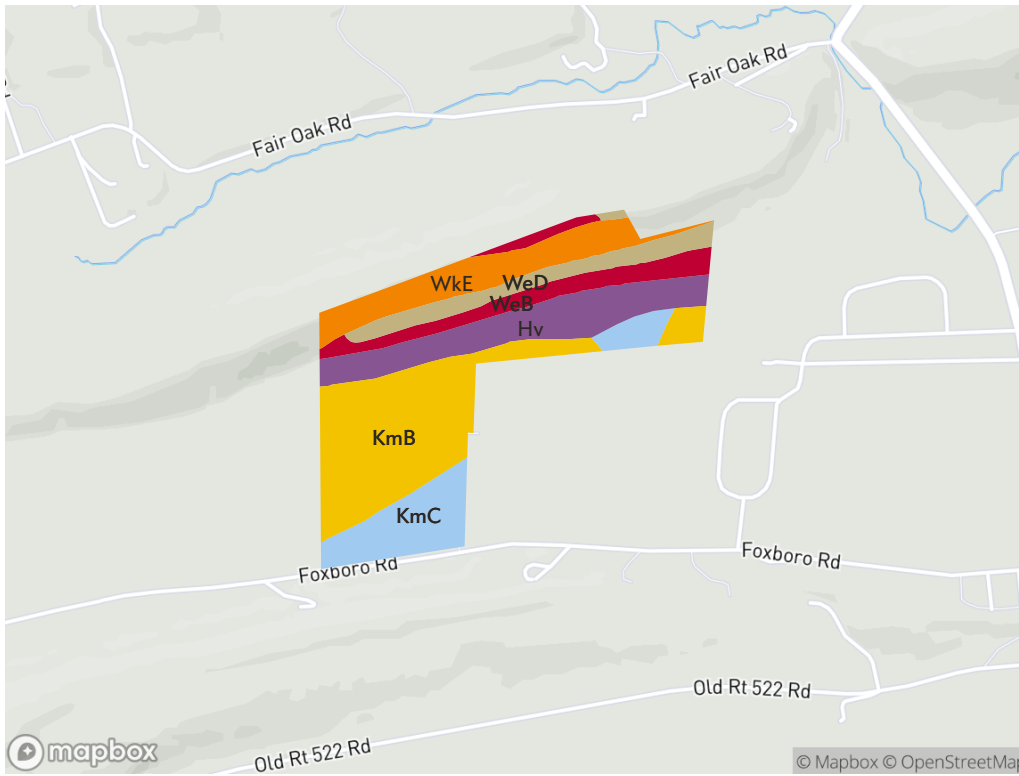
All fields

Source: NRCS Soil Survey

98 ac.

| SOIL CODE | SOIL DESCRIPTION | ACRES | PERCENTAGE OF FIELD | SOIL CLASS | NCCPI |
|--------------|---|-------|---------------------|------------|-------------|
| KmB | Kreamer cherty silt loam, 3 to 8 percent slopes | 45.52 | 46.3% | 2 | 70.2 |
| Hv | Holly silt loam | 17.82 | 18.1% | 4 | 56.3 |
| WkE | Weikert and Klinesville shaly silt loams, steep | 10.37 | 10.6% | 7 | 6.5 |
| KmC | Kreamer cherty silt loam, 8 to 15 percent slopes | 10.20 | 10.4% | 3 | 66.7 |
| WeB | Weikert channery silt loam, 3 to 8 percent slopes | 7.68 | 7.8% | 3 | 31.2 |
| WeD | Weikert channery silt loam, 15 to 25 percent slopes | 6.64 | 6.8% | 6 | 22.4 |
| 98.22 | | | | | 54.3 |

2 fields, 98 acres in Snyder County, PA



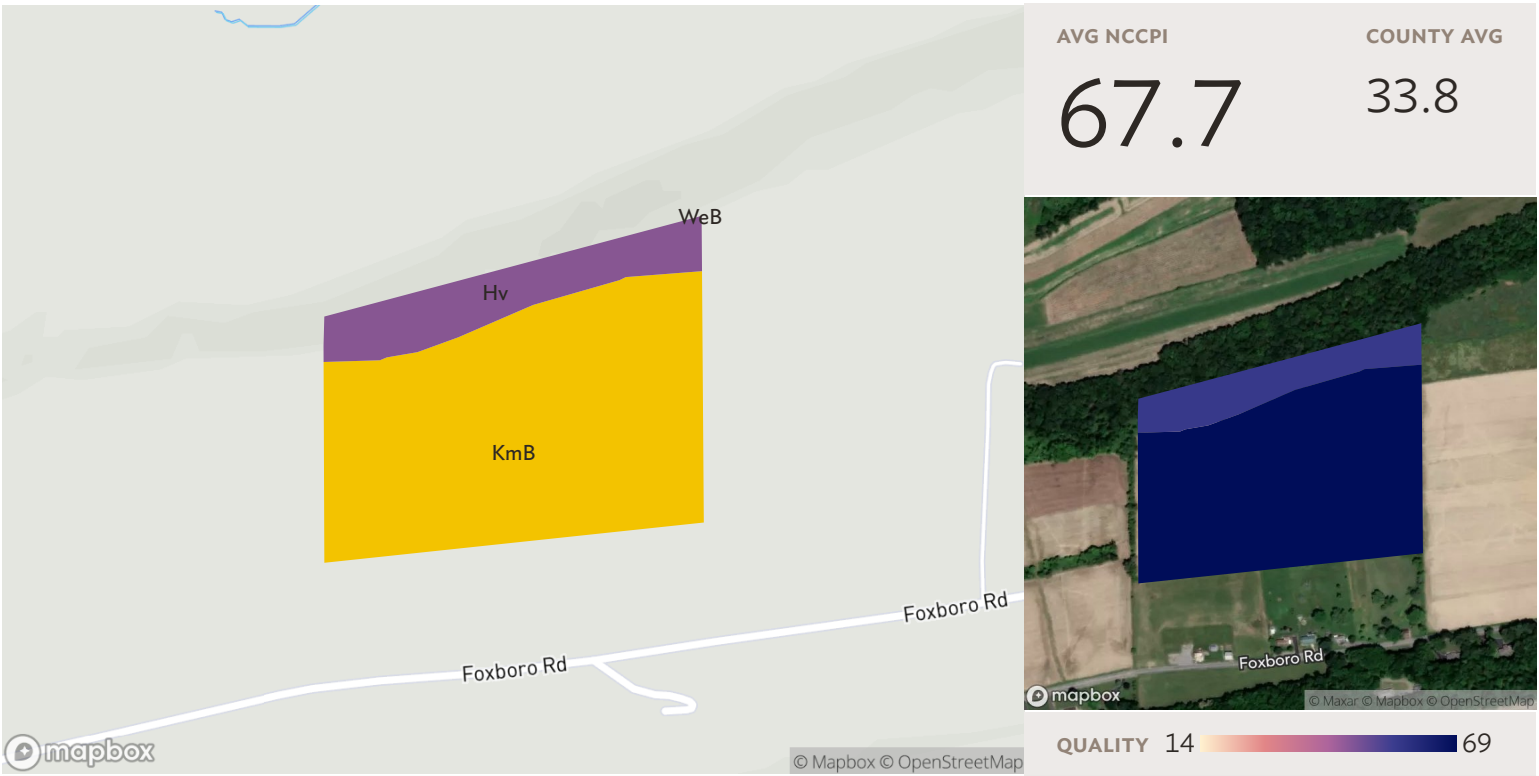
Field 1

Source: NRCS Soil Survey

71 ac.

| SOIL CODE | SOIL DESCRIPTION | ACRES | PERCENTAGE OF FIELD | SOIL CLASS | NCCPI |
|--------------|---|-------|---------------------|------------|-------------|
| KmB | Kreamer cherty silt loam, 3 to 8 percent slopes | 23.61 | 33.0% | 2 | 70.2 |
| Hv | Holly silt loam | 12.99 | 18.2% | 4 | 56.3 |
| WkE | Weikert and Klinesville shaly silt loams, steep | 10.37 | 14.5% | 7 | 6.5 |
| KmC | Kreamer cherty silt loam, 8 to 15 percent slopes | 10.20 | 14.3% | 3 | 66.7 |
| WeB | Weikert channery silt loam, 3 to 8 percent slopes | 7.68 | 10.7% | 3 | 31.2 |
| WeD | Weikert channery silt loam, 15 to 25 percent slopes | 6.64 | 9.3% | 6 | 22.4 |
| 71.48 | | | | | 49.3 |

2 fields, 98 acres in Snyder County, PA



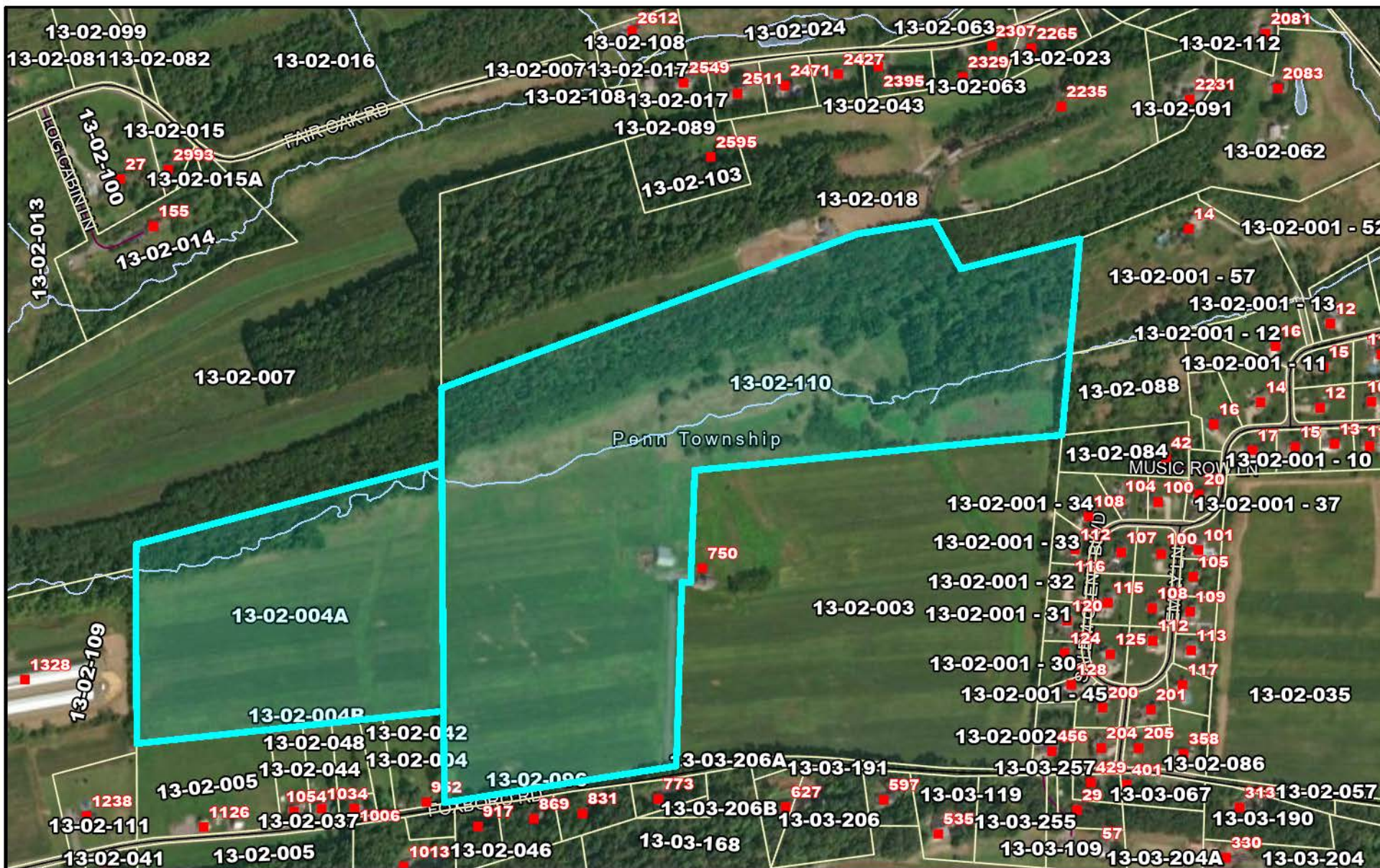
Field 2

Source: NRCS Soil Survey

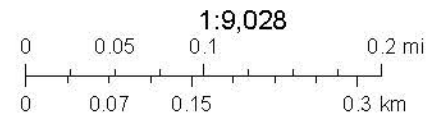
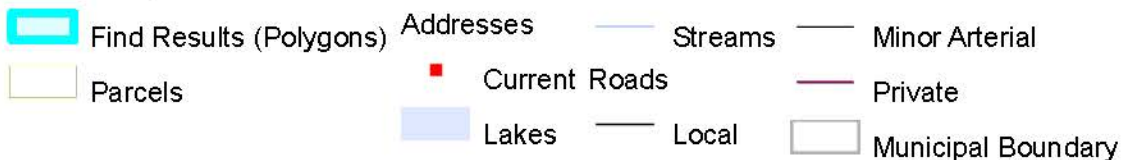
27 ac.

| SOIL CODE | SOIL DESCRIPTION | ACRES | PERCENTAGE OF FIELD | SOIL CLASS | NCCPI |
|-----------|---|-------|---------------------|------------|-------------|
| ■ KmB | Kreamer cherty silt loam, 3 to 8 percent slopes | 21.91 | 81.9% | 2 | 70.2 |
| ■ Hv | Holly silt loam | 4.83 | 18.1% | 4 | 56.3 |
| ■ WeB | Weikert channery silt loam, 3 to 8 percent slopes | 0.00 | 0.0% | 3 | 31.2 |
| | | | | | 67.7 |

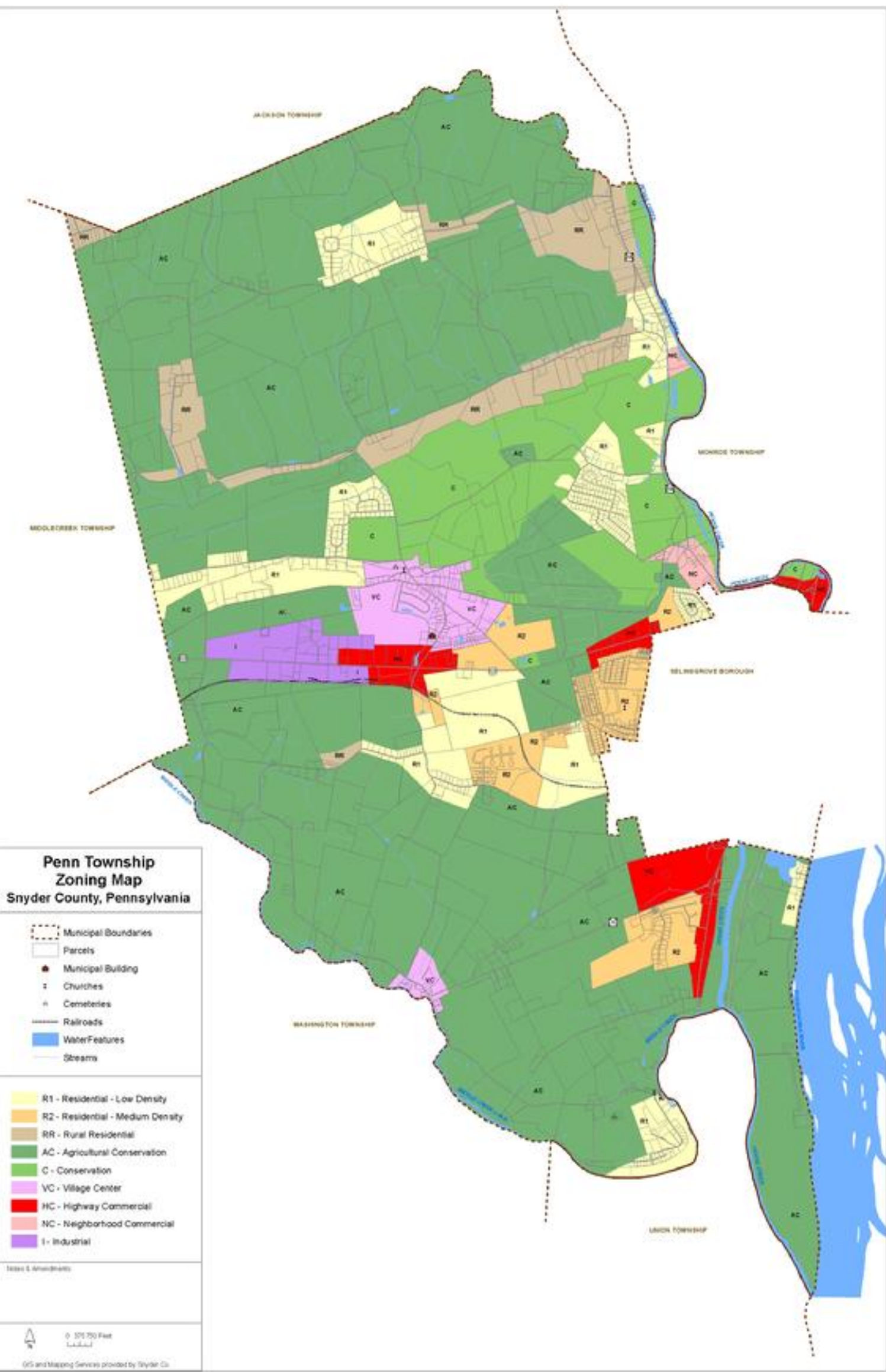
Snyder County



October 10, 2024



Maxar



**Penn Township
Zoning Map
Snyder County, Pennsylvania**

- Municipal Boundaries
- Parcels
- Municipal Building
- Churches
- Cemeteries
- Railroads
- Water Features
- Streams

- R1 - Residential - Low Density
- R2 - Residential - Medium Density
- RR - Rural Residential
- AC - Agricultural Conservation
- C - Conservation
- VC - Village Center
- HC - Highway Commercial
- NC - Neighborhood Commercial
- I - Industrial

Notes & Amendments